

UniSUC *WHISPER* Fluid Collection System Starter Package
SKU# ALPP-US-25WSP1-1 / ALPP-US-25WSP1SR-1 / ALPP-US-25WSP1SL-1

READ ME FIRST

Assembly Instructions &
Important Notes

What's included in your Package

UniSUC **WHISPER** Fluid Collection System Starter Package

SKU# ALPP-US-25WSP1-1 / ALPP-US-25WSP1Sx-1*

- ✓ Low Noise (<41dB) Suction Machine
- ✓ 2000 ml/cc Collection Canister with built-in bacteria air filter
- ✓ 12v External DC Power Supply
- ✓ 10ft Suction Tubing
- ✓ UniSUC Starter Kit (Reusable Frame + 10 Disposable Liners) (included with ALPP-US-25WSP1Sx-1 only)
- ✓ Set of User Configurable Accessories:
 - Canister Holder
 - UniSUC Frame Holder
 - UniSUC Liners Holder



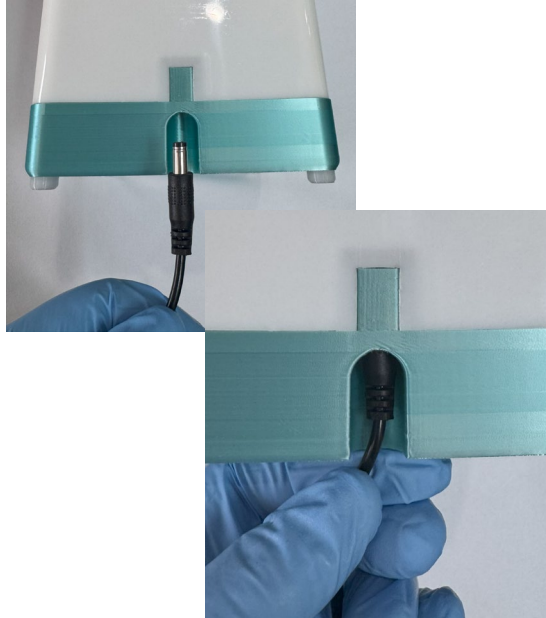
Note: ALPP-US-25WSP1Sx-1 = ALPP-US-25WSP1SR-1 / ALPP-US-25WSP1SL-1

Attaching 12v External DC Power Supply to Suction Machine

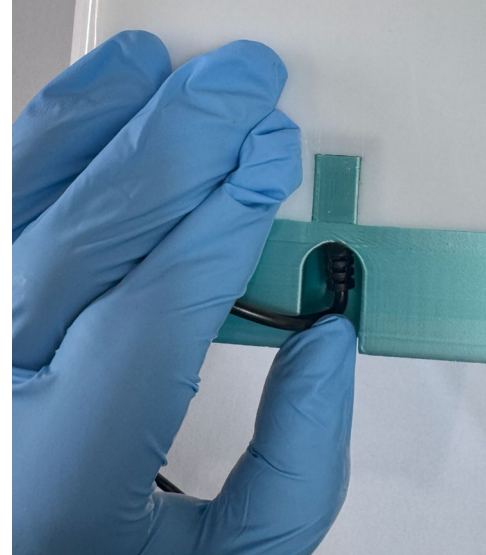
Ready these parts



Unwind power chord and insert connector into Suction Machine Receptacle



Using thumb, push connector in until you feel a mild snap to secure connection

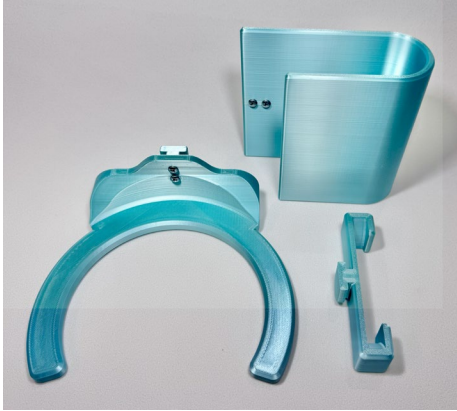


Lastly, plug power supply into a 120vac receptacle



Attach Holder Accessories

1) Prepare accessories



3) Attach UniSuc Frame Holder to Suction Machine



2) Attach Canister Holder to Suction Machine



4) Attach UniSuc Liners Holder to Suction Machine



**All
Holders
Attached**



**Frame &
Liners are
held in
place**



Attach Tube to Collection Canister & Suction Machine

Attach end of Silicone Connection Tube with the 90 degree coupler to the Center Nozzle of the Canister Lid

Place Canister into its holder on the Suction Machine and connect other end of Silicone Tube to the Suction Machine Input Nozzle



Assemble your UniSUC and attach to the Suction Machine assembly

- 1)** Connect one end of the 10ft Patient Connection Tube to the canister nipple labeled “Patient”



- 2)** Follow the QR code above to view UniSUC Device assembly illustrations and videos:
Use your smart device camera to identify and click on link or go to <https://www.alpepllc.com/user-guides/>

- 3)** Connect assembled UniSUC Device to the other end of the Patient Connection Tube attached to the canister

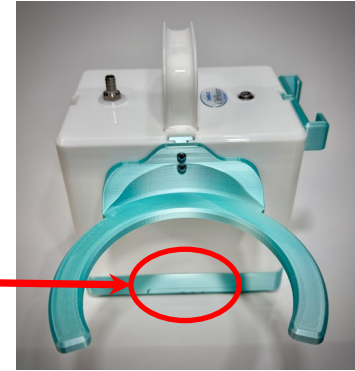


- 4)** Push this button to switch ON or OFF the WHISPER Suction Machine



IMPORTANT

- During operation of the suction machine, DO NOT put on top of carpet or surfaces that will block or impede airflow from the exhaust ports located here
- Empty canister collected fluids frequently to ensure it does not overflow to the point where the canister float is activated which cuts-off suction.
- Machine should be switched OFF while canister is being emptied.
- For more information, please visit our UniSUC product website at <https://alpepllc.com/unisuc>



UniSUC Page



AlPep YouTube
Channel

Or use
your
smart
device to
view
these
QR
Codes
and click
on the
link